



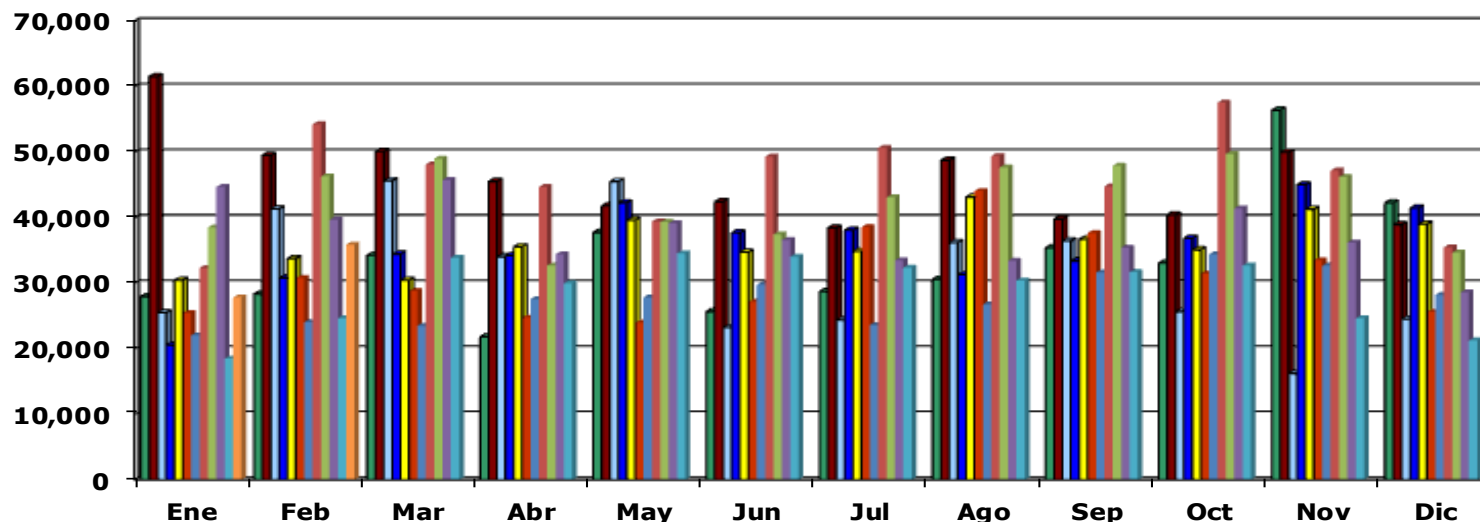
R. Ayuntamiento de Monterrey N.L.
Desarrollo Integral de la Familia

Indicadores de Control

FEBRERO 2015

Personas beneficiadas en programas DIF

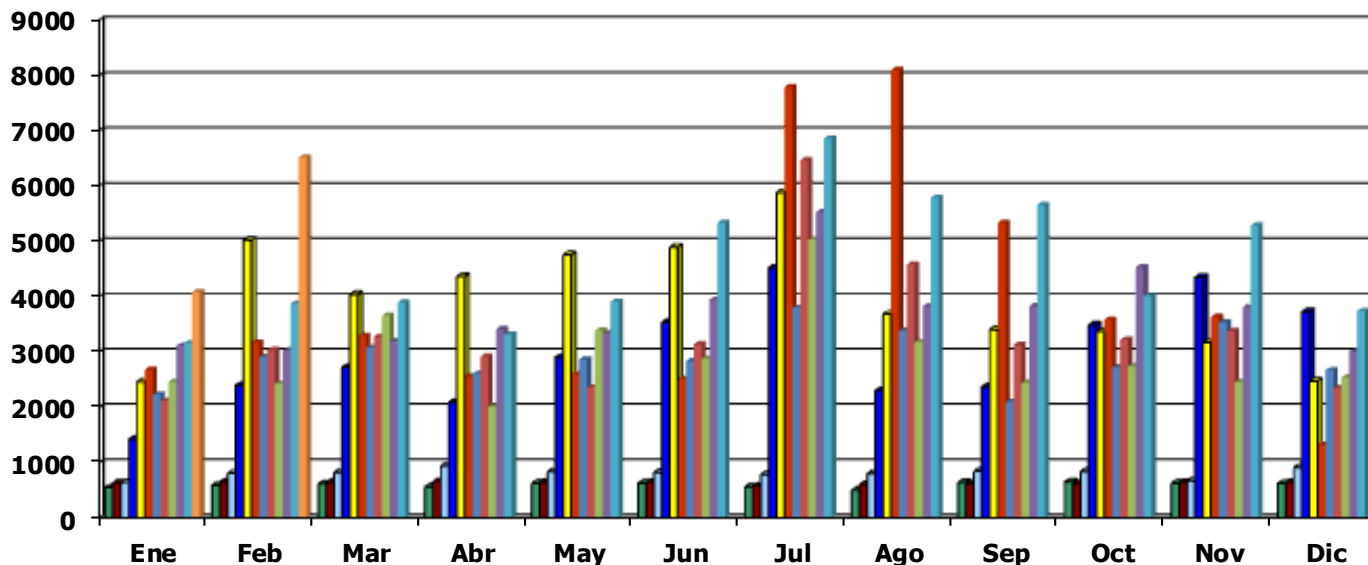
Área/Meses	Ene	Feb	Mar	Abr	May	Jun	Jul	Ago	Sep	Oct	Nov	Dic	Total
2004	27,973	28,336	34,263	21,822	37,753	25,677	28,726	30,615	35,424	33,107	56,417	42,255	402,368
2005	61,524	49,499	50,121	45,533	41,797	42,435	38,429	48,761	39,781	40,437	49,972	38,939	547,228
2006	25,511	41,356	45,656	34,049	45,520	23,251	24,373	36,199	36,466	25,673	16,253	24,531	378,838
2007	20,566	30,829	34,455	34,216	42,289	37,702	38,090	31,295	33,390	33,865	45,056	41,481	423,234
2008	30,452	33,777	30,452	35,563	39,605	34,746	34,871	43,154	36,718	35,108	41,303	39,022	434,771
2009	25,466	30,799	28,809	24,755	23,971	27,144	38,546	44,082	37,659	31,444	33,511	25,621	371,807
2010	22,049	24,055	23,485	27,566	27,838	29,802	23,622	26,789	31,651	34,410	32,678	28,230	332,175
2011	32,310	54,241	48,163	44,706	39,417	49,302	50,667	49,419	44,792	57,554	47,196	35,483	553,250
2012	38,521	46,319	49,007	32,725	39,357	37,477	43,098	47,686	47,950	49,746	46,237	34,664	512,787
2013	44,678	39,666	45,757	34,399	39,152	36,583	33,497	33,455	35,421	41,434	36,202	28,590	448,834
2014	18,490	24,651	33,917	30,027	34,549	34,026	32,384	33,672	31,696	32,712	24,637	21,271	352,032
2015	27,853	35,891											63,744



* Se refleja un incremento de beneficiados debido a que en el mes de Febrero se realizaron entregas especiales de apoyos funcionales, así como el inicio de las actividades de la Ciudad del Adulto Mayor.

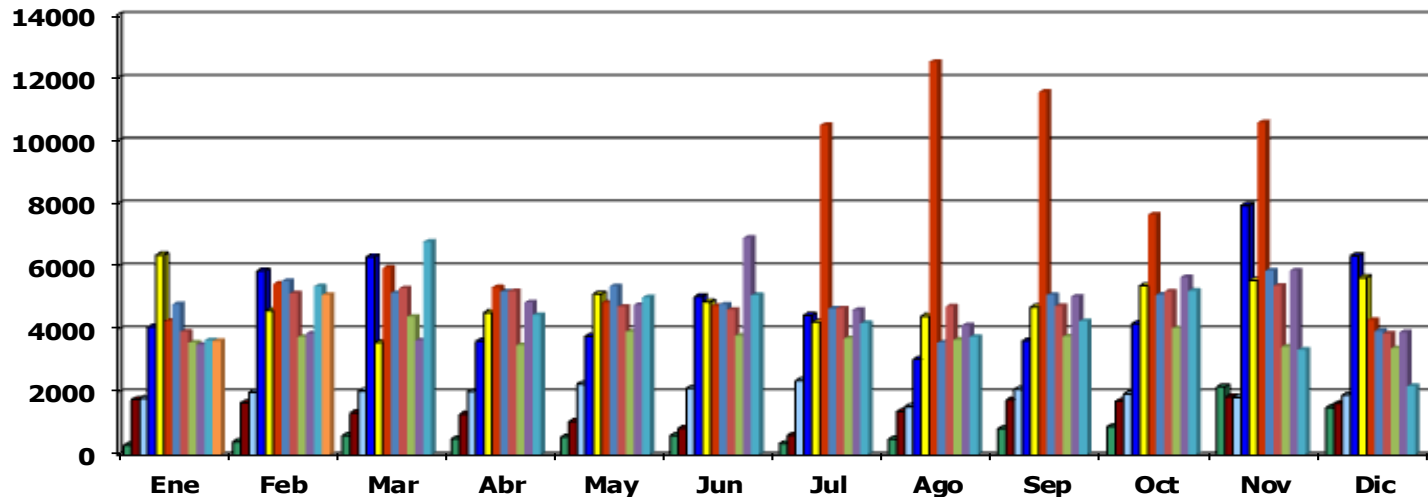
Niños beneficiados con programas DIF

Área/Meses	Ene	Feb	Mar	Abr	May	Jun	Jul	Ago	Sep	Oct	Nov	Dic	Total
2004	546	589	610	563	627	627	557	499	641	650	628	624	7,161
2005	633	645	646	647	639	640	574	599	611	616	643	643	7,536
2006	638	808	818	937	833	821	778	795	843	839	669	912	9,691
2007	1,419	2,393	2,723	2,086	2,901	3,536	4,516	2,299	2,370	3,486	4,346	3,725	35,800
2008	2,454	5,018	4,038	4,364	4,757	4,894	5,881	3,682	3,402	3,368	3,167	2,471	47,496
2009	2,675	3,165	3,286	2,554	2,591	2,508	7,788	8,094	5,333	3,584	3,632	1,317	46,527
2010	2,227	2,909	3,073	2,602	2,859	2,830	3,791	3,384	2,095	3,017	3,530	2,669	34,986
2011	2,117	3,033	3,270	2,912	2,355	3,134	6,463	4,575	3,125	3,221	3,374	2,345	39,924
2012	2,460	2,422	3,653	2,009	3,386	2,877	5,028	3,175	2,442	2,738	2,452	2,536	35,178
2013	3,111	3,023	3,189	3,411	3,332	3,940	5,528	3,820	3,825	4,534	3,802	3,006	44,521
2014	3,155	3,872	3,891	3,315	3,906	5,331	6,858	5,785	5,653	4,009	5,282	3,739	54,796
2015	4,081	6,516											10,597



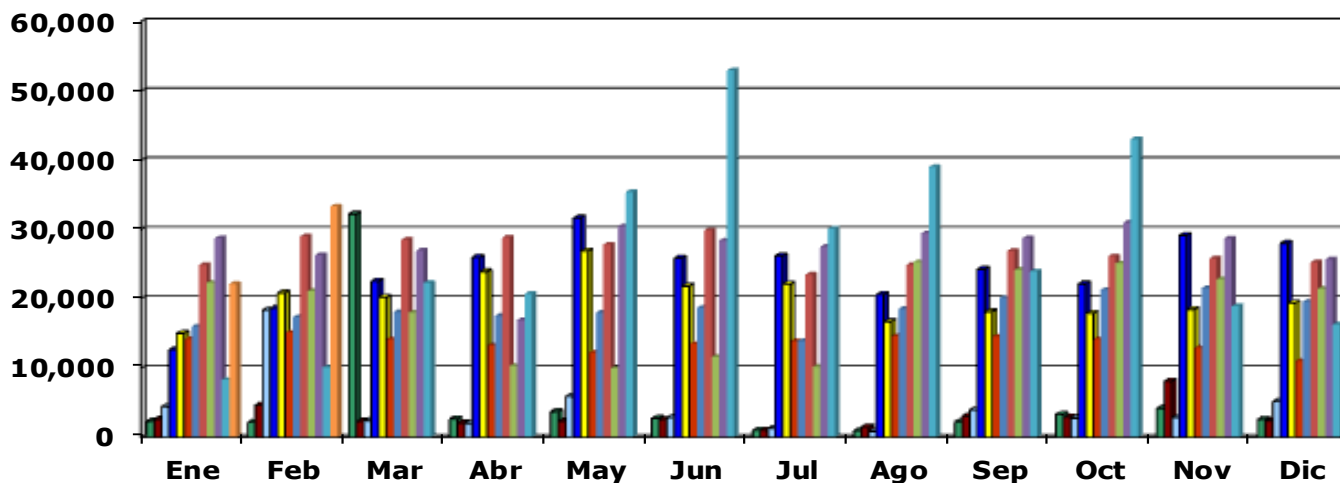
Adolescentes y Jóvenes beneficiados en programas DIF

Área/Meses	Ene	Feb	Mar	Abr	May	Jun	Jul	Ago	Sep	Oct	Nov	Dic	Total
2004	310	423	619	514	570	616	363	511	839	904	2,168	1,513	9,350
2005	1,765	1,659	1,342	1,300	1,066	849	625	1,382	1,752	1,708	1,850	1,641	16,939
2006	1,798	1,986	2,041	2,016	2,256	2,119	2,372	1,540	2,093	1,939	1,827	1,905	23,892
2007	4,074	5,853	6,301	3,621	3,775	5,033	4,445	3,043	3,629	4,176	7,935	6,337	58,222
2008	6,357	4,586	3,572	4,528	5,116	4,867	4,226	4,415	4,704	5,378	5,555	5,640	58,944
2009	4,259	5,450	5,950	5,333	4,839	4,737	10,488	12,496	11,546	7,639	10,576	4,287	87,600
2010	4,788	5,525	5,147	5,193	5,366	4,780	4,648	3,574	5,089	5,094	5,860	3,939	59,003
2011	3,921	5,140	5,298	5,205	4,714	4,619	4,658	4,729	4,732	5,194	5,384	3,860	57,454
2012	3,573	3,756	4,397	3,493	3,918	3,789	3,714	3,666	3,771	4,034	3,442	3,390	44,943
2013	3,504	3,858	3,641	4,850	4,771	6,902	4,612	4,126	5,035	5,652	5,864	3,901	56,716
2014	3,645	5,358	6,779	4,450	5,010	5,084	4,190	3,756	4,255	5,222	3,345	2,190	53,284
2015	3,624	5,087											8,711



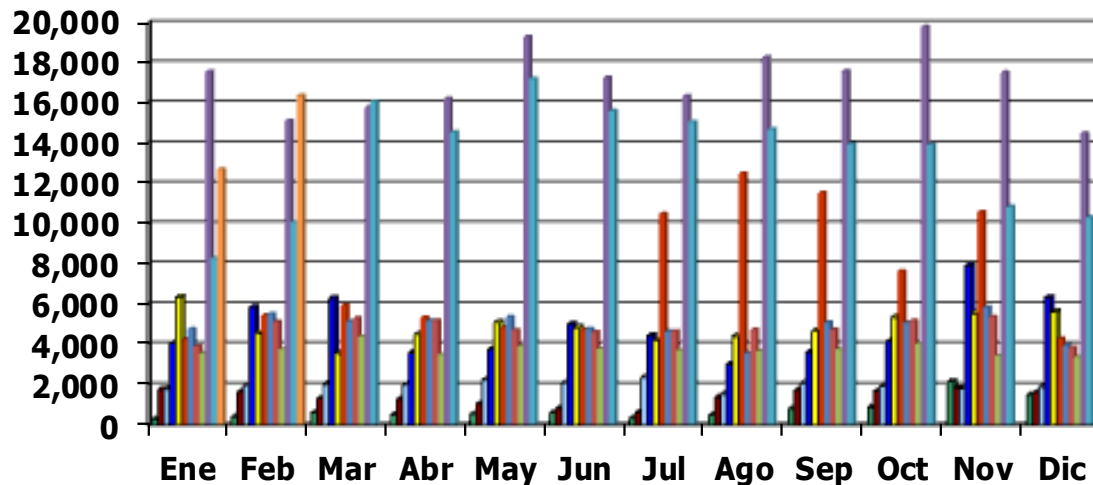
Adultos beneficiados con programas DIF y PAASV

Área/Meses	Ene	Feb	Mar	Abr	May	Jun	Jul	Ago	Sep	Oct	Nov	Dic	Total
2004	2,335	2,161	32,201	2,657	3,696	2,738	1,005	966	2,260	3,305	4,180	2,600	60,104
2005	2,612	4,612	2,337	2,073	2,332	2,570	1,008	1,485	3,039	2,909	8,082	2,392	35,451
2006	4,451	18,345	2,413	1,968	5,897	2,830	1,291	838	3,937	2,759	2,855	5,148	52,732
2007	12,653	18,618	22,480	25,965	31,646	25,853	26,181	20,584	24,231	22,126	29,104	27,971	287,412
2008	14,989	20,830	20,174	23,904	26,837	21,784	22,087	16,684	18,109	17,857	18,431	19,359	241,045
2009	14,157	15,097	14,106	13,222	12,195	13,462	13,856	14,570	14,520	14,129	12,870	10,996	163,180
2010	15,965	17,329	18,066	17,480	17,959	18,690	13,890	18,545	20,127	21,286	21,523	19,573	220,433
2011	24,843	29,010	28,525	28,833	27,796	29,838	23,475	24,823	26,879	26,113	25,786	25,246	321,167
2012	22,295	21,113	17,989	10,297	9,950	11,609	10,141	25,288	24,174	25,094	22,795	21,436	222,181
2013	28,702	26,271	26,943	16,906	30,441	28,399	27,497	29,427	28,726	30,955	28,663	25,643	328,573
2014	8,290	10,080	22,249	20,721	35,382	52,912	30,083	38,993	23,933	43,009	18,920	16,273	320,845
2015	22,130	33,305											55,435



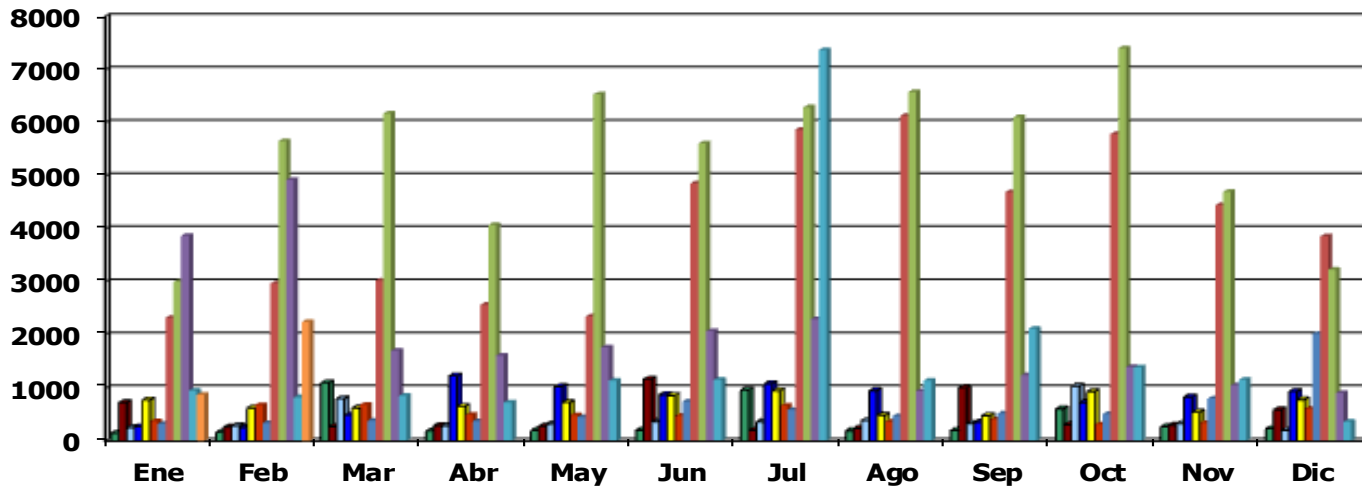
Beneficiarios en los Programas de Tercera Edad

Área/Meses	Ene	Feb	Mar	Abr	May	Jun	Jul	Ago	Sep	Oct	Nov	Dic	Total
2004	310	423	619	514	570	616	363	511	839	904	2,168	1,513	9,350
2005	1,765	1,659	1,342	1,300	1,066	849	625	1,382	1,752	1,708	1,850	1,641	16,939
2006	1,798	1,986	2,041	2,016	2,256	2,119	2,372	1,540	2,093	1,939	1,827	1,905	23,892
2007	4,074	5,853	6,301	3,621	3,775	5,033	4,445	3,043	3,629	4,176	7,935	6,337	58,222
2008	6,357	4,586	3,572	4,528	5,116	4,867	4,226	4,415	4,704	5,378	5,555	5,640	58,944
2009	4,259	5,450	5,950	5,333	4,839	4,737	10,488	12,496	11,546	7,639	10,576	4,287	87,600
2010	4,788	5,525	5,147	5,193	5,366	4,780	4,648	3,574	5,089	5,094	5,860	3,939	59,003
2011	3,921	5,140	5,298	5,205	4,714	4,619	4,658	4,729	4,732	5,194	5,384	3,860	57,454
2012	3,573	3,756	4,397	3,493	3,918	3,789	3,714	3,666	3,771	4,034	3,442	3,390	44,943
2013	17,557	15,126	15,798	16,222	19,296	17,254	16,352	18,282	17,581	19,810	17,518	14,498	205,294
2014	8,290	10,080	16,084	14,556	17,214	15,610	15,060	14,950	13,959	13,925	10,841	10,320	160,889
2015	12,716	16,359											29,075



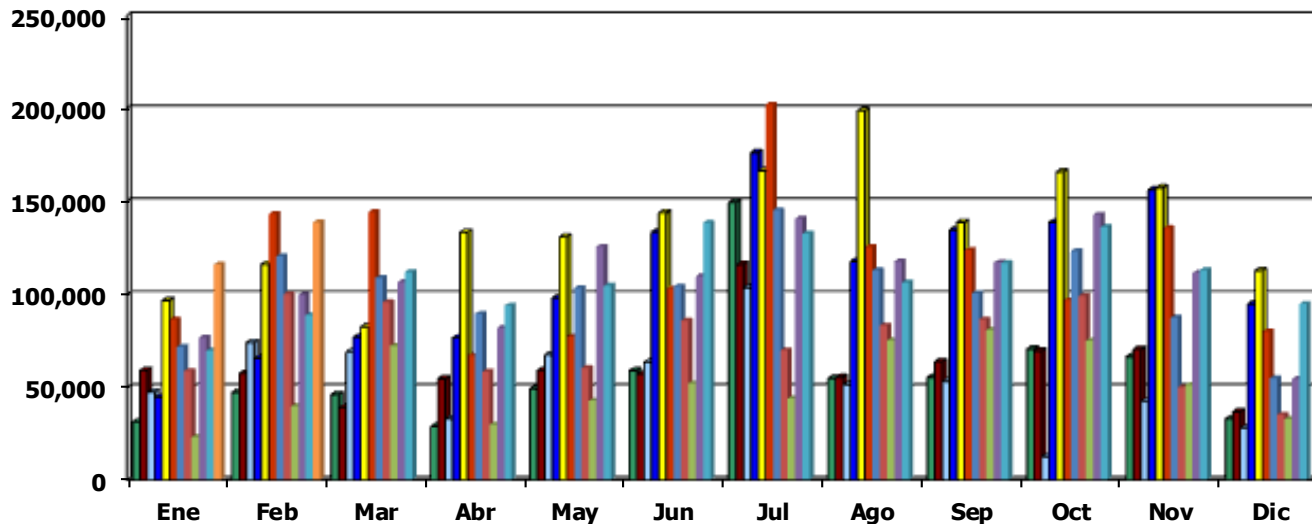
Personas beneficiadas en el Área de Atención a Personas con Discapacidad DIF

Área/Meses	Ene	Feb	Mar	Abr	May	Jun	Jul	Ago	Sep	Oct	Nov	Dic	Total
2004	149	168	1,101	192	203	203	964	198	203	611	274	235	4,501
2005	729	263	275	291	280	1,170	203	243	1,008	311	300	594	5,667
2006	255	290	802	289	325	369	369	389	337	1,036	336	206	5,003
2007	269	255	492	1,230	1,027	876	1,083	953	361	729	834	939	9,048
2008	776	628	623	656	732	860	947	489	483	935	545	782	8,456
2009	377	680	689	497	487	477	670	364	409	315	343	611	5,919
2010	329	346	388	379	457	749	593	475	519	511	803	2,026	7,575
2011	2,322	2,972	3,028	2,571	2,346	4,853	5,865	6,131	4,686	5,782	4,446	3,860	48,862
2012	3,005	5,646	6,169	4,071	6,532	5,604	6,287	6,572	6,100	7,396	4,694	3,231	65,307
2013	3,864	4,922	1,706	1,612	1,767	2,075	2,301	946	1,240	1,394	1,052	907	23,786
2014	955	827	856	732	1,138	1,160	1,695	1,143	2,120	1,392	1,158	367	8,506
2015	875	2,242											875



Servicios Proporcionados DIF

Área/Meses	Ene	Feb	Mar	Abr	May	Jun	Jul	Ago	Sep	Oct	Nov	Dic	Total
2004	31,194	47,107	45,996	28,840	49,088	58,805	149,411	54,632	55,185	70,448	66,250	32,873	689,829
2005	58,982	57,293	39,017	54,451	58,912	56,971	115,973	55,187	63,633	69,305	70,391	36,670	736,785
2006	47,359	73,942	68,928	33,076	67,250	63,348	103,518	51,268	53,061	12,604	42,303	28,025	644,682
2007	44,614	65,436	76,731	76,431	97,937	133,419	176,112	117,654	134,529	138,602	156,181	94,618	1,312,264
2008	96,510	116,043	82,372	133,268	130,770	143,713	166,299	198,738	138,540	165,755	157,179	112,572	1,641,759
2009	86,283	143,230	144,212	66,897	77,094	103,031	201,975	125,420	123,625	96,680	135,523	79,882	1,383,852
2010	71,550	120,315	108,747	89,427	103,265	104,167	145,163	112,771	100,388	123,165	87,294	54,643	1,220,895
2011	58,690	100,147	95,746	58,185	60,320	85,721	69,773	83,081	86,347	99,131	49,910	35,143	882,194
2012	22,984	39,596	72,148	29,737	42,620	51,812	43,881	75,092	80,760	74,826	51,176	32,871	617,503
2013	76,660	99,676	106,491	81,747	125,502	109,664	140,583	117,577	117,012	142,671	111,397	54,333	1,283,313
2014	69,628	88,620	111,817	93,751	104,544	138,284	132,522	106,188	116,771	136,074	112,976	94,722	1,305,897
2015	115,840	138,736											254,576



Nutrición Raciones Alimenticias Entregadas

Área/Meses	Ene	Feb	Mar	Abr	May	Jun	Jul	Ago	Sep	Oct	Nov	Dic	Total
2004	37,505	44,674	56,768	27,110	46,843	52,435	53,677	54,970	49,849	55,250	61,409	41,722	582,212
2005	53,989	56,075	40,602	54,083	61,933	66,295	57,436	68,009	62,635	64,005	66,101	45,735	696,898
2006	55,534	61,060	81,672	38,102	76,038	87,158	68,834	57,003	52,854	35,044	33,257	22,259	668,815
2007	50,870	33,115	30,179	35,418	43,133	42,385	42,378	35,575	44,087	36,960	38,941	33,867	466,908
2008	34,679	36,967	22,229	42,713	43,711	41,318	38,153	63,256	49,505	39,347	46,276	39,412	497,566
2009	26,890	33,658	26,998	12,311	15,482	26,171	20,304	33,994	22,297	23,156	28,213	17,868	287,342
2010	21,019	26,709	19,866	20,038	23,667	24,165	30,752	24,143	23,990	37,178	24,819	16,076	292,422
2011	20,600	22,573	27,905	16,386	23,582	27,310	16,376	26,332	29,493	30,691	25,905	14,216	281,369
2012	16,463	19,228	13,949	6,525	14,270	13,054	11,829	12,357	10,831	12,995	13,026	8,200	152,727
2013	12,351	13,759	14,959	18,763	25,254	21,524	17,547	21,285	20,789	22,730	21,807	13,047	223,815
2014	16,801	19,292	21,494	12,625	25,645	22,313	18,300	22,433	23,613	24,814	19,570	18,357	245,257
2015	19,096	23,040											42,136

