



2015-2018

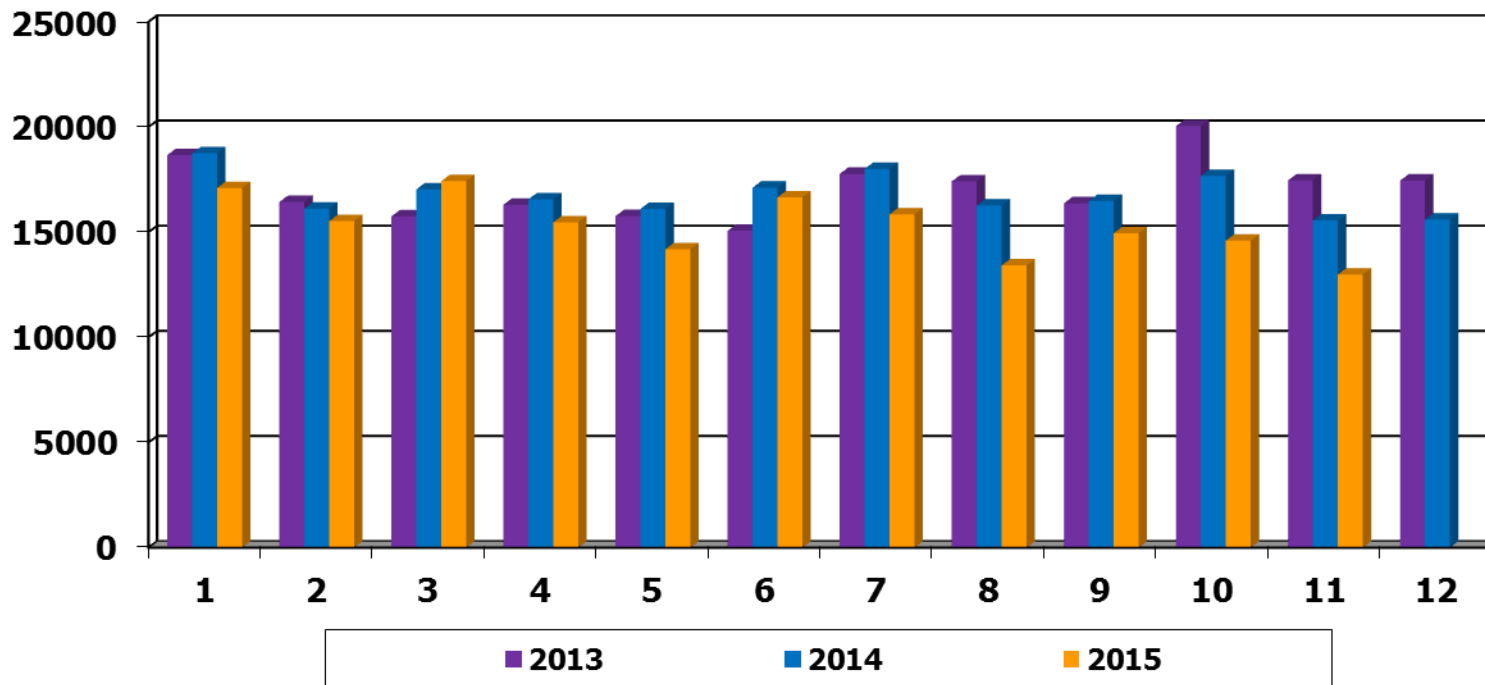
NOVIEMBRE 2015

# Indicadores de Servicios Médicos

---

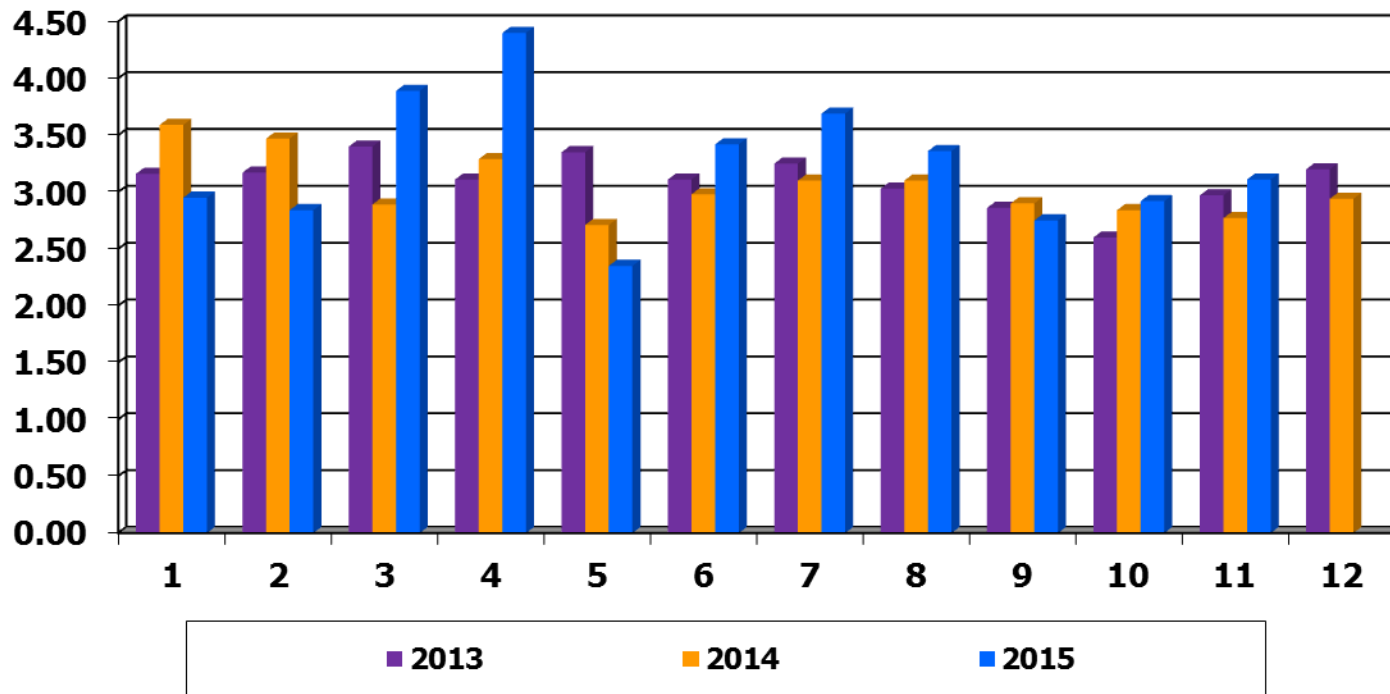
## NUMERO DE CONSULTAS REALIZADAS

CONSULTA /MESES	ENE	FEB	MAR	ABR	MAY	JUN	JUL	AGO	SEP	OCT	NOV	DIC	TOTAL	Prom Mensual
2013	18,664	16,434	15,750	16,307	15,765	15,066	17,770	17,414	16,370	20,044	17,461	17,450	204,495	17,041
2014	18,751	16,114	17,037	16,564	16,107	17,117	18,009	16,266	16,484	17,676	15,557	15,600	201,282	16,774
2015	17,098	15,520	17,425	15,470	14,189	16,655	15,848	13,419	14,948	14,595	12,985		168,152	15,287



## DIAS DE ESTANCIA HOSPITALARIA

%Estancias/Mes	Ene	Feb	Mar	Abr	May	Jun	Jul	Ago	Sep	Oct	Nov	Dic	Total	Prom Mensual
<b>2013</b>	3.16	3.17	3.4	3.11	3.35	3.11	3.25	3.03	2.86	2.60	2.97	3.2	<b>37.21</b>	<b>3.10</b>
<b>2014</b>	3.59	3.47	2.89	3.29	2.71	2.98	3.10	3.10	2.90	2.84	2.77	2.94	<b>36.58</b>	<b>3.05</b>
<b>2015</b>	2.95	2.84	3.89	4.4	2.35	3.42	3.69	3.36	2.75	2.92	3.11		<b>35.68</b>	<b>3.24</b>



## NUMERO DE CONSULTAS EN URGENCIAS

Consulta/Meses	Ene	Feb	Mar	Abr	May	Jun	Jul	Ago	Sep	Oct	Nov	Dic	Total	Prom Mensual
2013	1,516	1,343	1,575	1,216	1,385	1,401	1,336	1,226	1,338	1,263	1,380	1,424	16,403	1,367
2014	1,478	1,204	1,392	1,183	1,417	1,392	1,324	1,232	1,441	1,761	1,692	1,726	17,242	1,437
2015	1,509	1,397	1,722	1,509	1,817	1,630	1,357	1,279	1,367	1,331	1,318		16,236	1,476

